



North West Weeds

NOXIOUS WEED CONTROL UNIT FOR GWYDIR AND INVERELL SHIRES

Please address all correspondence to the General Manager, Gwydir Shire Council, Locked Bag 5, BINGARA, NSW, 2404 - Phone 02 6729 1016, faxes 02 6729 1400, email tannerl@northnet.com.au

Silverleaf Nightshade

Silverleaf nightshade (*Solanum elaeagnifolium*) is a serious problem in cultivation paddocks. Once established, it's virtually impossible to eradicate. The plant's root system can penetrate to a depth 2 metres or more and chemical control is generally ineffective on these plants because the chemicals don't reach all of the roots.

Similarly, ploughing breaks up the roots and most of the root parts grow into new plants.



The only way control can be achieved is by preventing plants from producing seed. And, because the seeds can remain viable in the ground for 15 years, it's a long term project!

[Photo, above, shows a patch of silverleaf nightshade near Bingara Jan 02. The vehicle in the background gives you an idea of the size of the patch]

IDENTIFICATION



Silverleaf nightshade grows to a height of around 80 centimetres. Very difficult to pull out of the ground because of the root system - and the prickles on the plant! The flowers are purple (sometimes white) with yellow stamens - the plant is usually (but not always) armed with small, sharp prickles.

The round fruit (berries) change in colour as they mature, from green stripes to motley yellow and orange. Each fruit contains about 60 seeds. The fruit is spread by floodwaters, machinery, animals and birds. Sheep can carry the seed in their digestive tract for periods of 7 days or

more without affecting the germination capability of the seed.

To further confuse the identification issue, silverleaf nightshade has three common "look-alikes": native quena, Narrawa burr and apple of Sodom.

MORE INFORMATION? PLEASE CONTACT YOUR LOCAL WEEDS OFFICER:

Stephen Kneller Bingara 0427 240 061	Clem McLeod Inverell 0427 453 052	Doug Stieger Warialda 0427 291 912	Les Tanner Head Office 0427 241 806
---	--------------------------------------	---------------------------------------	--

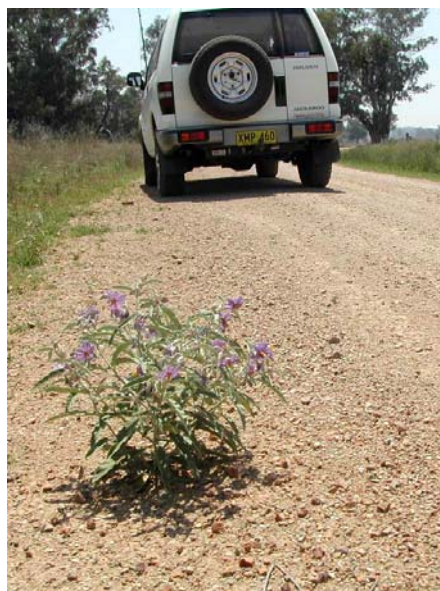
OR check out our website on www.northwestweeds.nsw.gov.au

EFFECT ON ANIMALS

All parts of this plant, particularly the green or ripe fruit, can be toxic to animals. Symptoms include bloating, trembling, loose faeces, nasal discharge, salivation and breathing difficulties. Cattle are more susceptible than sheep. Goats or horses don't seem to be affected.

MORE INFORMATION: Includes "Noxious Plants of Australia", by Parsons and Cuthbertson [Inkata Press].

Noxious Weeds Act 1993: Silverleaf nightshade is a CC3 Plant - Legal requirements within Shires of Gwydir & Inverell: The plant must be fully and continuously suppressed and destroyed.



CONTROL METHODS

Non-Chemical Options: The use of strong competitive crops or pastures will give some control, quarantine the infestation and prevent seeding (sheep can carry the seed in their digestive tract for periods of 7 days or more without affecting the germination capability of the seed). **Cultivation is ineffective as it aids the spread from root pieces!**

Chemical Options: According to NSW Dept of Primary Industries' excellent booklet "*Noxious and Environmental Weed Control Handbook 2004/2005*", treatments for silverleaf nightshade include:

Chemical	Rate: Spot/Boom	Comments
Picloram + 2,4-D Tordon 75 D®	650 ml in 100L of water 15.0 L per hectare	Spray to wet thoroughly, and extend treated areas beyond the last plant for 1 metre. Apply early flowering before berry set.
Glyphosate 360 g/L Various trade names	2.0 L in 100 L of water	Apply at early flowering, at berry set stage, spray thoroughly to wet. Use only with good soil conditions.
Fluroxypyr Starane ® 200 Tomigan 200EC 2,4-D amine (500g/L)	750 ml per hectare or 0.375 + 1.5-2 L 2,4-D amine (500 g/L)	Add Uptake Spraying Oil at 1/Ha Follow-up treatment is critical
2,4 -D amine 500 g/L Various trade names OPM0015A	1.4 L + 1.0 L crop oil per hectare 5L +2.0 L crop oil (for use in pastures)	For use in summer crops Apply at early flowering before berry set. A 7 day withhold period applies. For use in pastures. Apply at early flowering before berry set. A 7 day withhold period applies.

IMPORTANT: USE OF PESTICIDES - ALWAYS READ THE LABEL

Pesticides must only be used for the purpose for which they are registered and must not be used in any other situation or in any manner contrary to the directions on the label. Never use a herbicide in any way contrary to the label recommendations. Withholding periods must be strictly observed.

DISCLAIMER: The information contained herein is based on knowledge and understanding at the time of writing. However, because of advances in knowledge, users are reminded of the need to ensure that information upon which they rely is up to date and to check currency of the information with the appropriate officer of North West Weeds or the user's independent adviser.