



North West Weeds

NOXIOUS WEED CONTROL UNIT FOR GWYDIR AND INVERELL SHIRES

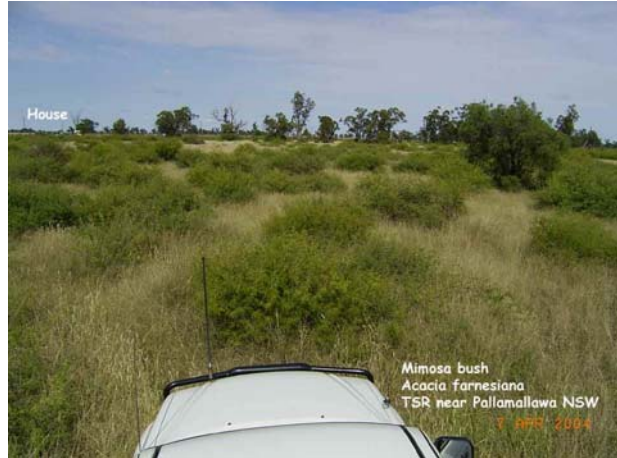
Please address all correspondence to the General Manager, Gwydir Shire Council, Locked Bag 5, BINGARA, NSW, 2404 - Phone 02 6729 1016, facs 02 6729 1400, email tannerl@northnet.com.au

Mimosa Bush

Mimosa bush* (*Vachellia farnesiana*- prev. *Acacia farnesiana*) is an invasive and thorny plant spreading onto many grazing properties in north-western New South Wales. It has taken over large areas around Yetman, Pallamallawa, Moree (see photo, right).

[*Mimosa bush - not to be confused with northern Australia's *Mimosa pigra*. Mimosa is sometimes also incorrectly referred to as "prickly acacia".]

Mimosa bush is classified by NSW Dept of Infrastructure, Planning & Resources as "native" to NSW. It does, therefore, come under the Native Vegetation and Compliance Act umbrella.



The new (2002) version of Volume 2 of *Flora of NSW* describes the plant as: "Native of trop. Amer., probably introduced into Aust. prior to European settlement. Widely cultivated overseas for its decorative qualities and the essential oil obtained from its flowers for use in the perfume industry. It is grown for hedges and windbreaks, however, it may form dense thickets and become weedy."

EFFECT ON ANIMALS



The thorny nature of the plant can cause eye damage to stock when they are foraging for grass amongst the base of the plant. On the credit side, stock obtain sustenance from new shoots and the protein-rich seed pods/beans. Unfortunately, the popularity of the seed pods ensures an ever-increasing number of new plants every year because the seeds pass through the animals to be deposited randomly throughout the paddock.

Photo, left: close-up of mimosa bush. Note the thorns, and the bean-like seed pods.

Photo, right: Each seed pod contains about 10 seeds.



MORE INFORMATION? PLEASE CONTACT YOUR LOCAL WEEDS OFFICER:

Stephen Kneller Bingara 0427 240 061	Clem McLeod Inverell 0427 453 052	Doug Stieger Warialda 0427 291 912	Les Tanner Head Office 0427 241 806
---	--------------------------------------	---------------------------------------	--

OR check out our website on www.northwestweeds.nsw.gov.au

IDENTIFICATION

Mimosa bush usually grows to a height of around 1 to 1.5 metres. Almost every part of the plant contains sharp thorns. Flowers are fluffy and yellow/golden (see photo). The seed pods are a prominent feature of the plant. Stock will seek out and eat the pods, spreading the seeds as they move on around the paddock.

Sheep were probably responsible for keeping mimosa bush down to an acceptable level. Reduced sheep numbers over the last 20 or so years has been a factor in the way this plant has taken off in recent years!



MORE INFORMATION:

Plants of Western New South Wales, by Cunningham, Mulham, Milthorpe & Leigh (published by Inkata Press).

CONTROL METHODS

Mimosa bush is currently NOT a declared noxious weed within Inverell and Gwydir Shires. However, all landholders are urged to keep this invasive pest plant off their properties!

Non-Chemical Options: Manual control, in the form of pushing plants out of the ground with a tractor blade or the like, is **NOT RECOMMENDED unless the area is followed up with intensive farming or careful chemical treatment.** While clearing gives an immediate impression that the problem has been solved, the same area will soon be infested with regrowth from broken root parts. And, dozens of small seedlings will also emerge because the parent plant has been taken out. **The only time** manual control would be an option would be in the case of minor infestations where the owner is able to constantly monitor and treat new growth. Subject to fire restrictions, controlled burning (minimum 2 subsequent burns) can also be effective.

Chemical options:

Chemical options	Rate: Spot/Boom	Comments
Triclopyr + Picloram Access [®]	1.0 L in 60 L of diesel	Basal bark application. Ensure all stems are treated. Delay treatment of regrowth on bulldozed plants until regrowth 1m high.
Clopyralid eg Lontrel [®] - PERMIT 6326	500 ml in 100 L of water plus surfactant	Apply as a high volume spray. Full coverage of shrub is essential. Apply to actively growing shrubs in full leaf. Please check full details as per Permit 6326
Fluroxypyr eg Starane [®]	3.0 L in 100 L of diesel	Basal bark treatment of plants up to 5 cm diameter. Registered for use in Qld and WA only

IMPORTANT: USE OF PESTICIDES - ALWAYS READ THE LABEL

Pesticides must only be used for the purpose for which they are registered and must not be used in any other situation or in any manner contrary to the directions on the label. Never use a herbicide in any way contrary to the label recommendations.

DISCLAIMER: The information contained herein is based on knowledge and understanding at the time of writing. However, because of advances in knowledge, users are reminded of the need to ensure that information upon which they rely is up to date and to check currency of the information with the appropriate officer of North West Weeds or the user's independent adviser.